



Funded by
the European Union

ROAD AS A FACTOR IN ROAD SAFETY

Boško Matović, Borjanka Dragović
Faculty of Mechanical Engineering, University of Montenegro

"Funded by the European Union. Views and opinions expressed are however those of the author(s) only and do not necessarily reflect those of the European Union or the European Education and Culture Executive Agency (EACEA). Neither the European Union nor EACEA can be held responsible for them."

**Transport of Dangerous Goods - Modernization of Curricula and Development of
Trainings for Professionals in the Western Balkans HEIs / DGTRANS**

Call: ERASMUS-EDU-2022-CBHE-STRAND-2

Project number: 101082187



INTRODUCTION

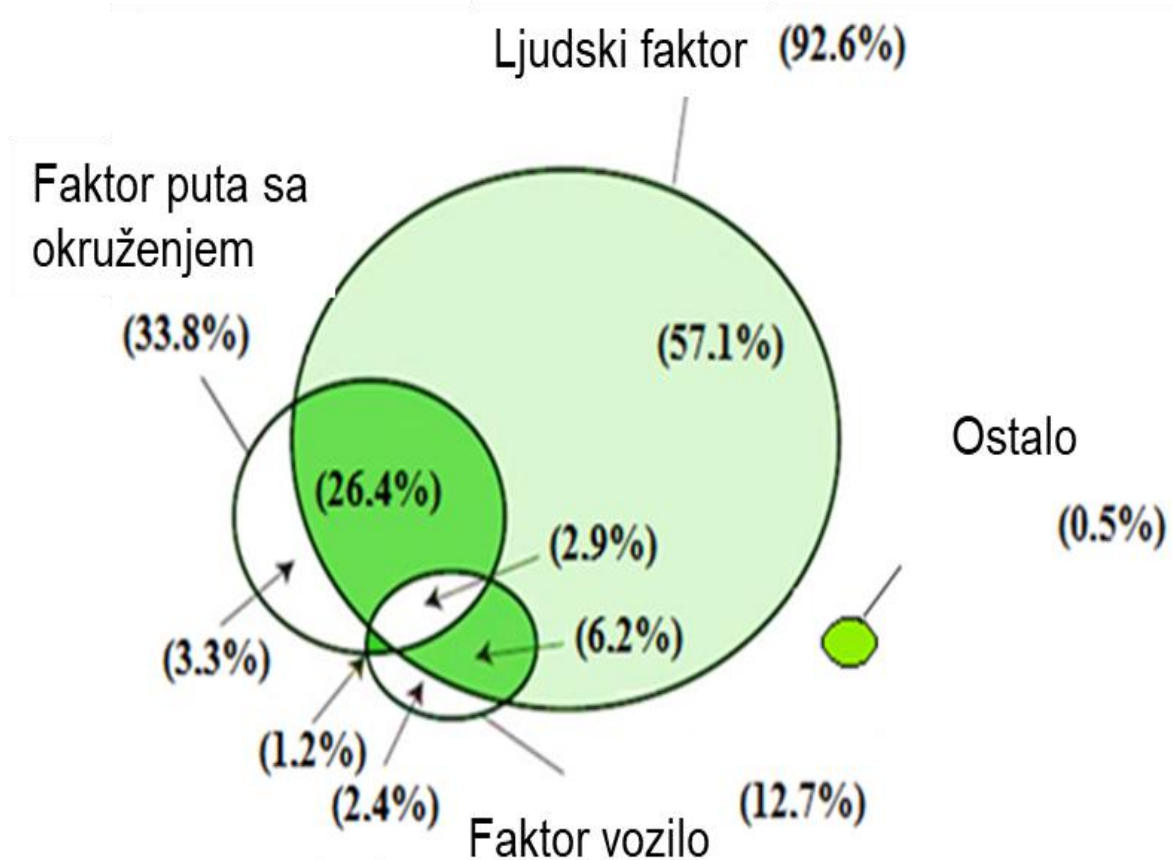


Funded by
the European Union

SLUČAJAN DOGAĐAJ!



KOMPLEKSNA STRUKTURA FAKTORA!



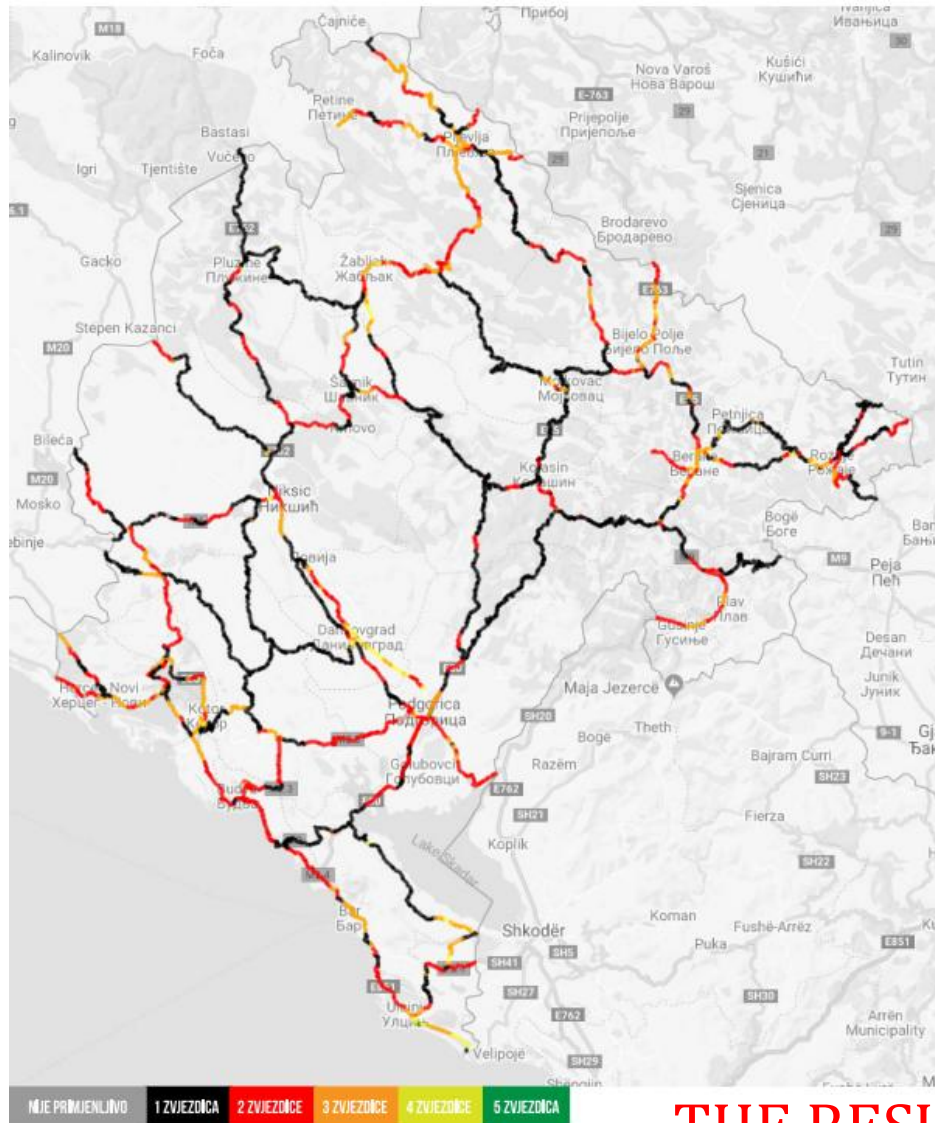
ROAD AS A FACTOR IN ROAD SAFETY



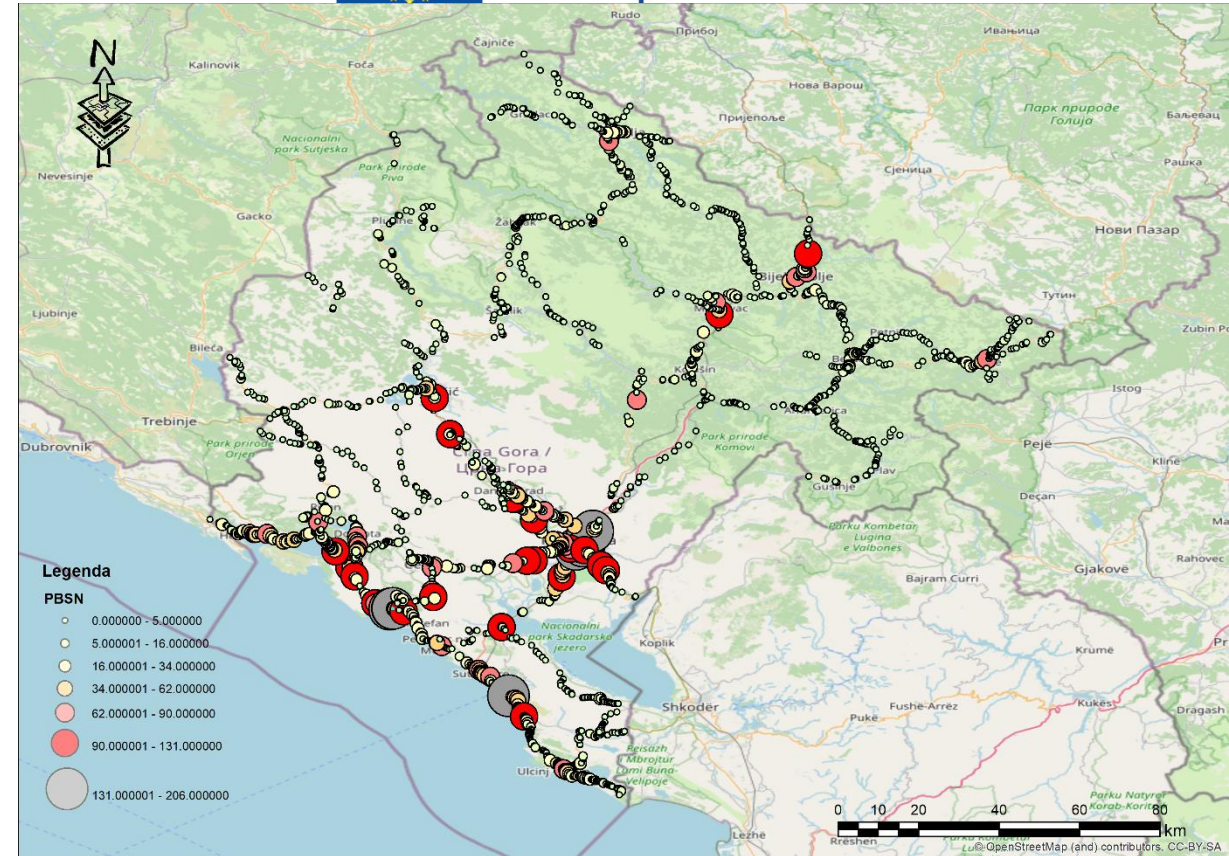
Funded by
the European Union

ONLY 2% OF ROADS (39.5 KM) RECEIVED A RATING OF 4 OR 5 STARS. IN CONTRAST, ALMOST 55% OF ROADS (MORE THAN 1,000 KM) RECEIVED THE LOWEST RATING OF 1 STAR.

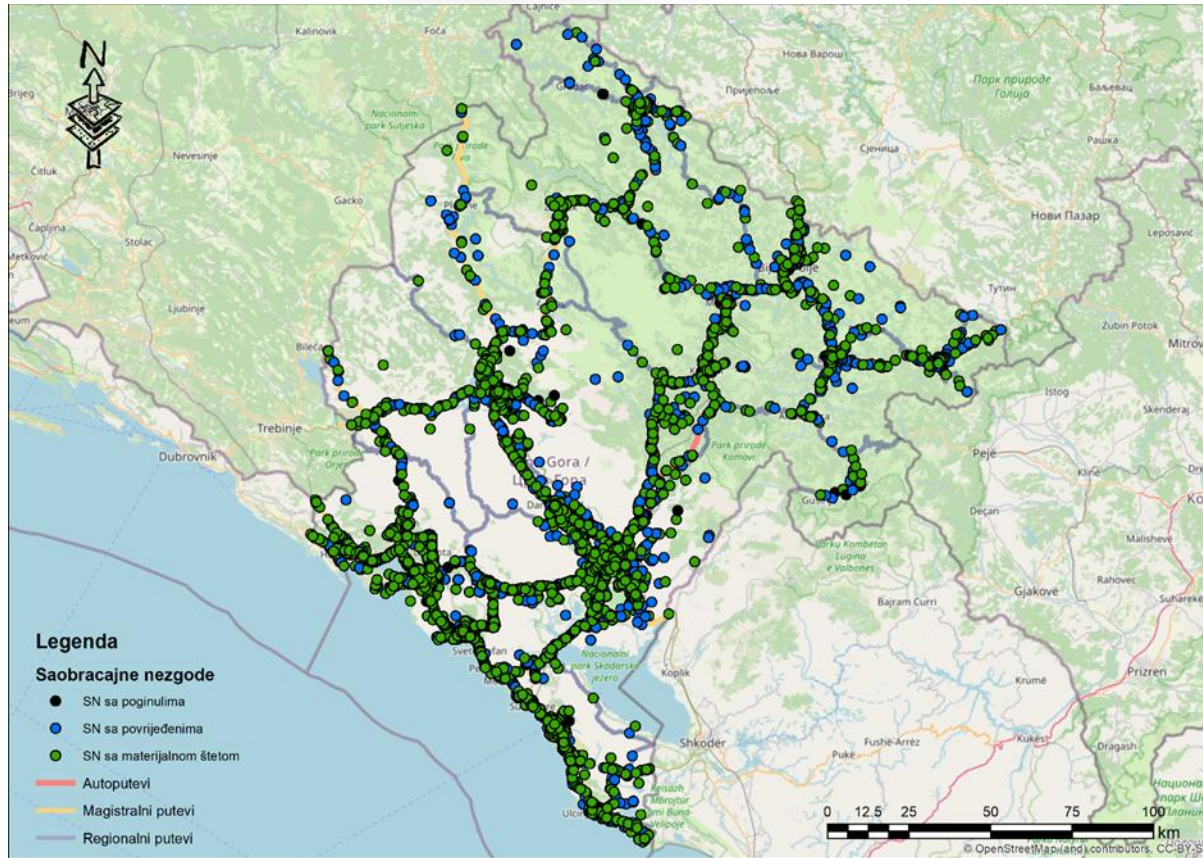
FOR MOTORCYCLISTS, THE RESULTS ARE EVEN MORE UNFAVORABLE. NEARLY TWO-THIRDS (66%) OF THE ANALYZED ROADS IN THE ROAD NETWORK FOR MOTORCYCLISTS FALL INTO THE CATEGORY OF THE WORST ROADS WITH ONE STAR.



THE RESULTS FOR MONTENEGRO ARE NOT GOOD.



M-2 | Bioče (R-13) - Mioska (R-21); M-2 | Virpazar 2 (R-15) - Golubovci - Podgorica 1 (M-3); M-3 | Cerovo (R-23) - Danilovgrad (R-14); M-2 | Podgorica 2 (M-4) - Bioče (R-13); M-8 | Lipci (M-1) - Grahovo - Vilusi 1 (M-7); M-1 | Sutomore (M-1.1) - Bar - Ulcinj (R-22); M-1 | Sutomore (M-1.1) - Bar - Ulcinj (R-22); M-10 | Cetinje (R-1) - Budva (M-1)



HIGHWAY: 47 ACC (0 FAT, 3 SI, 16 LI)

MAIN : 1.866 ACC (54 FAT, 260 SI, 815 LI)

REGIONAL: 272 ACC (8 FAT, 27 SI, 123 LI)

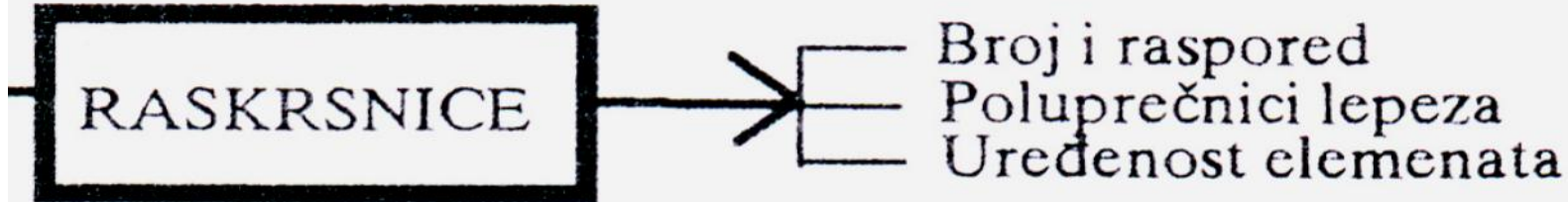
LOCAL: 482 ACC (3 FAT, 47 SI, 208 LI)

STREETS: 3729 ACC (12 FAT, 222 SI, 1333 LI)

2023 YEAR

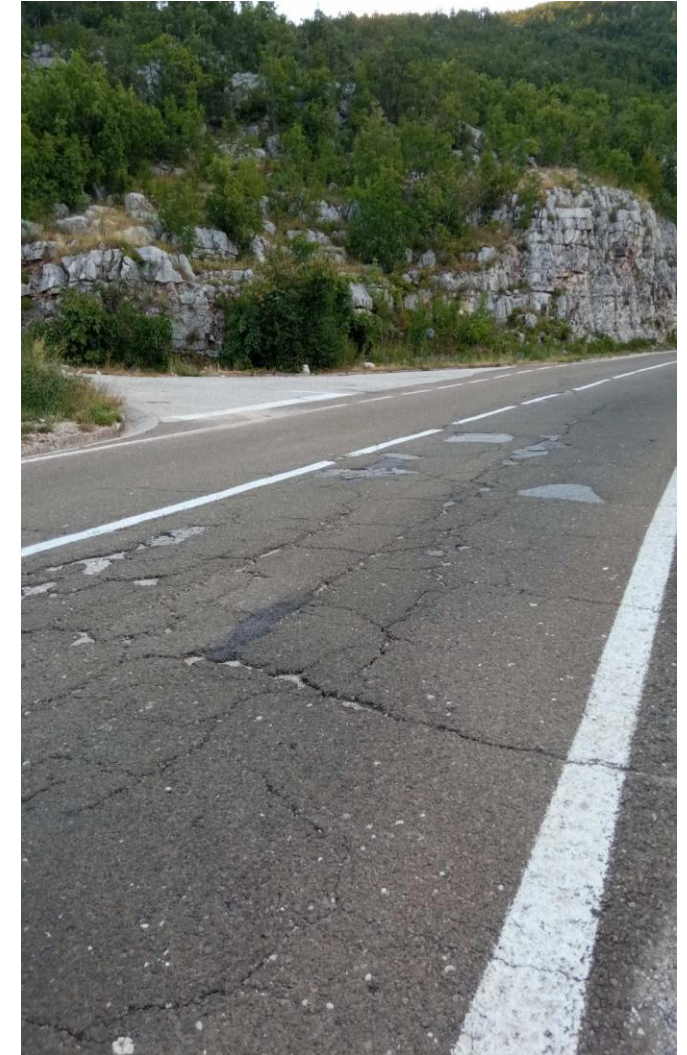


Funded by
the European Union





Funded by
the European Union



us Goods - Mod
in t

Development of Trainings for Professionals
DGTRANS



KRIVINE

- Frekvencija i geometrijski elementi
- Poluprečnici i poprečni nagibi
- Podužna i poprečna preglednost

OSTALI ELEMENTI

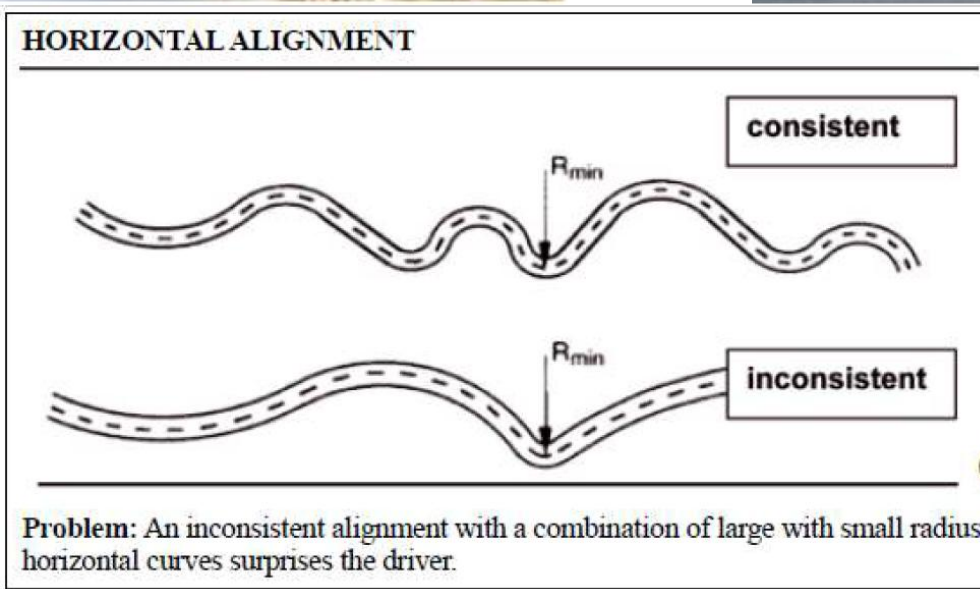
- Preglednost puta
- Broj i uređenost prelaza preko žel. pruge
- Eksploataciona ujednačenost
- Izbalansiranost saobraćajnih traka
- Kontinuitet pravca
- Podužni i poprečni nagibi
- Broj pristupnih puteva
- Broj i uređenost pešačkih prelaza



CURVES

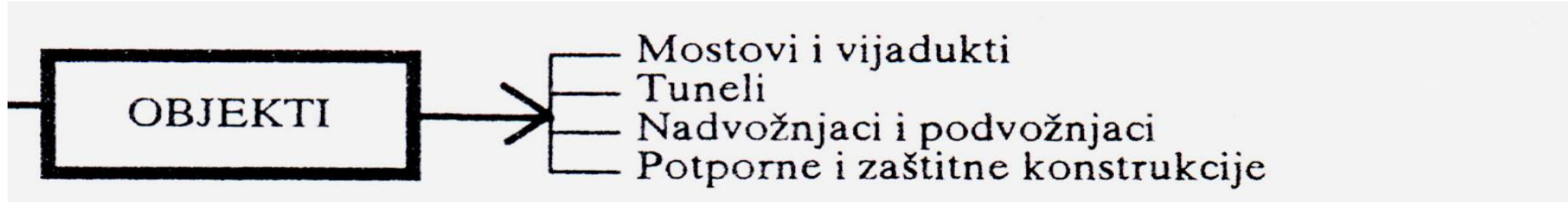


Funded by
the European Union





Funded by
the European Union





TUNELS



Funded by
the European Union



niza
We

Train



Funded by
the European Union





Funded by
the European Union

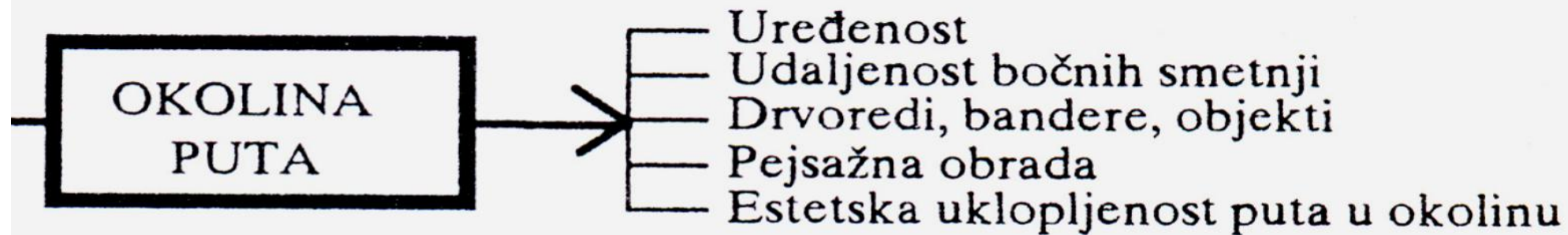
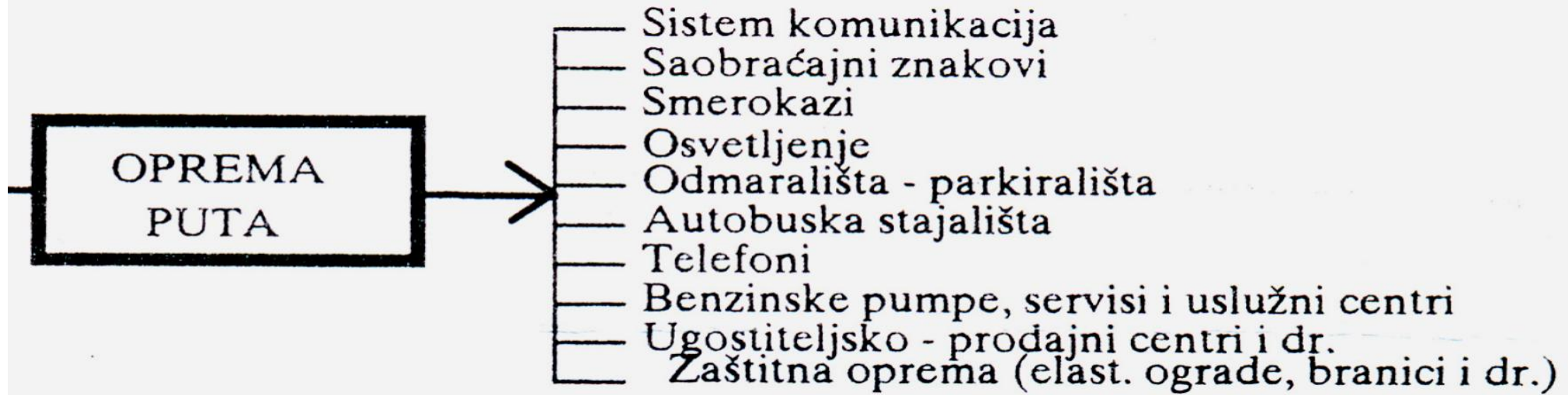


ernization
the Wester

ssionals

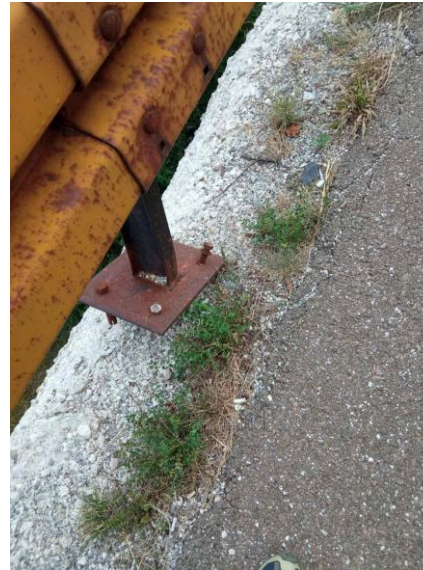


Funded by
the European Union





Funded by
the European Union



Transport of Dangerous Goods - Modernization of Road Safety Measures for Trucks
in the Western Balkans HEIs / DGTRANS



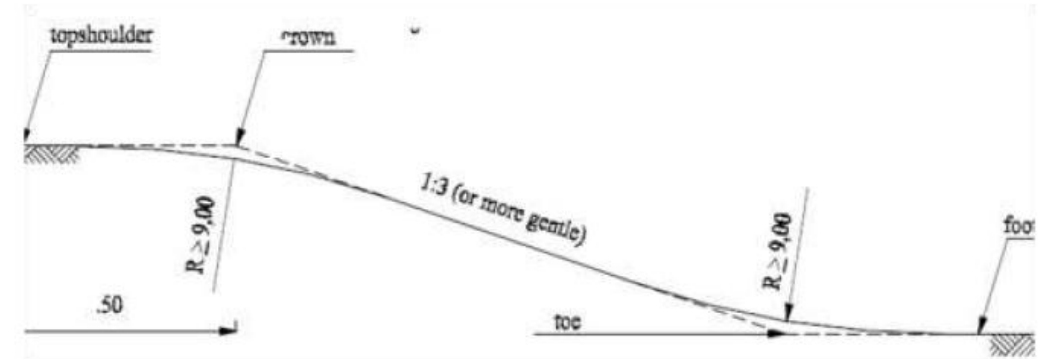
 Funded by
the European Union



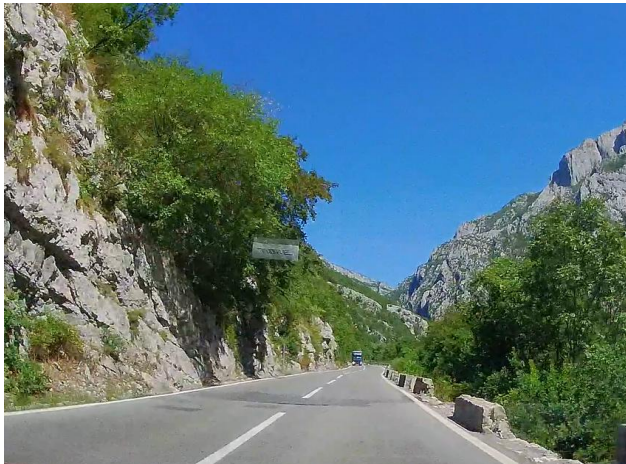
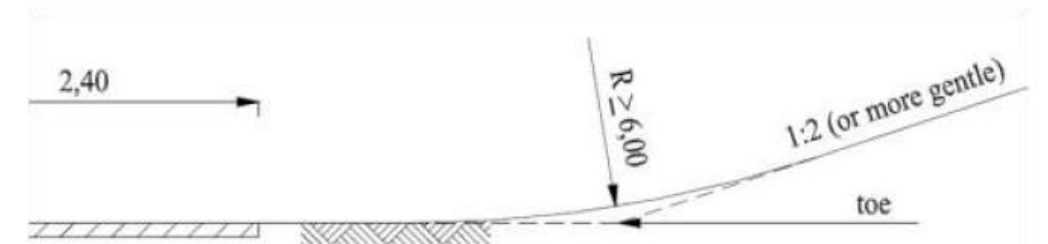
of Curricula and Development of Trainings for Professionals
in the western Balkans HEIs / DGTRANS



Funded by
the European Union

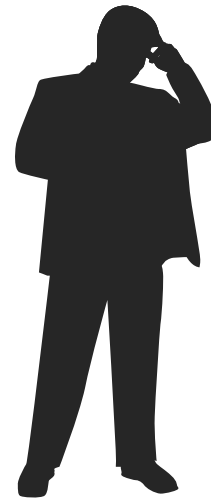


Slika 1-8: Bezbjedna kosina nasipa (Izvor: CROW, 1999)





QUESTIONS





Funded by
the European Union

THANK YOU FOR YOUR ATTENTION!